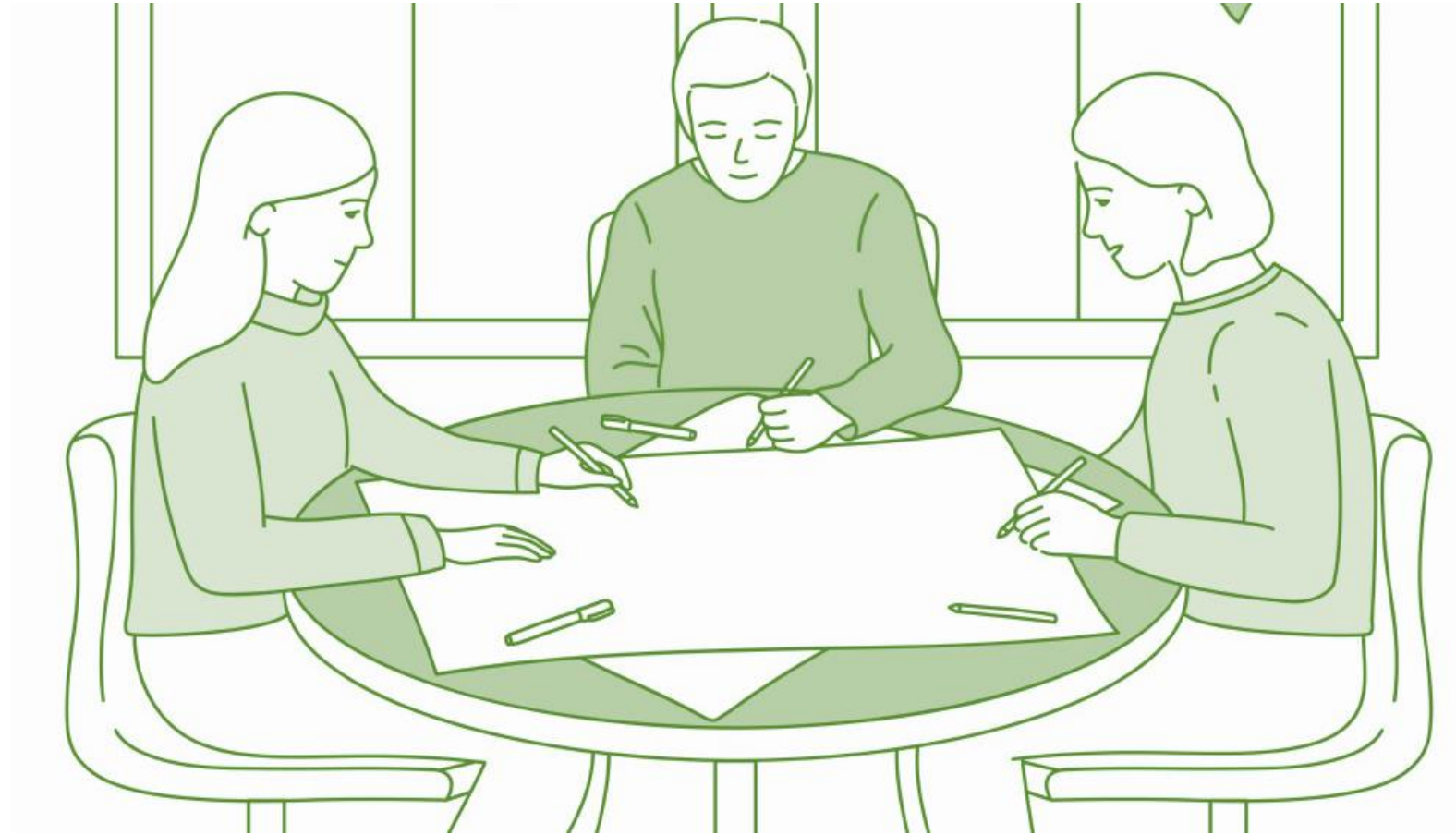


## THEORY OF CHANGE

Plan and outline  
steps towards  
innovations



# What is the Theory of Change?

**How and why a desired change is expected to happen in a particular context.**

- ✓ Theory of Change is a methodology for planning, participation used to promote social change.
- ✓ Making the distinction between desired and actual outcomes.
- ✓ Requiring stakeholders to model their desired outcomes before they decide on forms of intervention to achieve those outcomes.
- ✓ Can begin at any stage of an initiative, depending on the intended use.

**Moving the focus from the *logical framework* to the *missing middle*.**

# The missing middle?

## Mapping of the “missing middle”



- ✓ The best possible impact is realized when the idea is connected to the reality though filling the “missing middle”
- ✓ What, why, when and how the activities and innovations are leading to the desired change and goal?
- ✓ Ongoing process of reflection how the goal is achieved though the planned activities and innovations

# How it works?

 Identify long –term goal

 Mapping, connecting and explaining the preconditions or requirements necessary to achieve that goal

 Identifying your basic assumptions about the context

 Identifying activities that its implementation will lead to the desired change

 Developing indicators that will show the efficiency, the progress and the performance

 Explaining in details the logic, behind the planned activity

Setting initial conditions

Activities and innovations

Target groups

Outputs and outcomes

Long term change

*Why the activities and innovations are needed (based on the context)?*

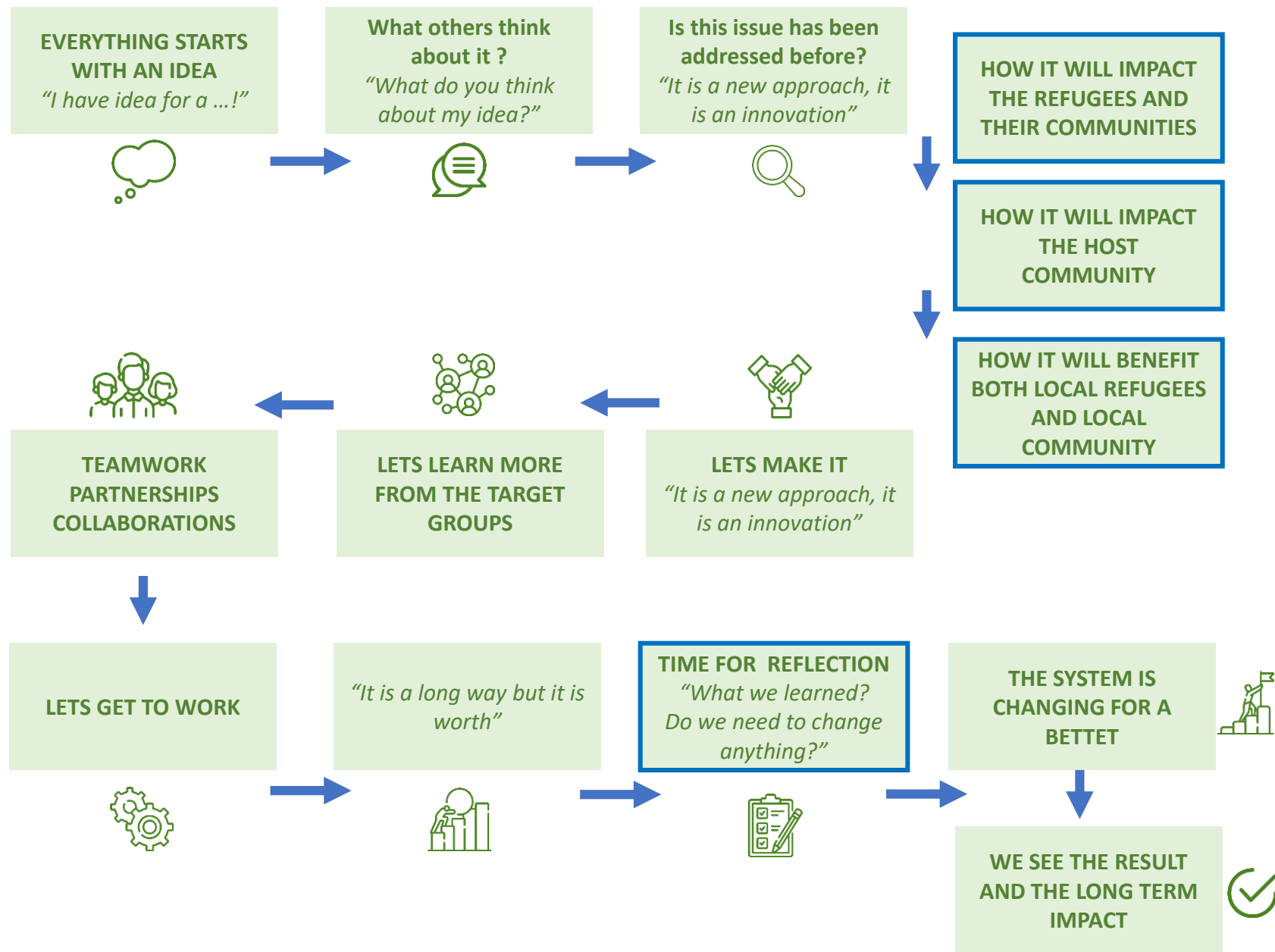
*What will lead to the desired change and goal?*

*For which target groups are these activities?*

*What will be the result and the impact from the implemented activities?*

*The ultimate difference that the innovation will make*

# To make it work for integration of refugees?



# Learn more about Refu'In

Contact us:  
[www.refuin.org](http://www.refuin.org)  
[info@refuin.org](mailto:info@refuin.org)  
[bgrc@bulrefocouncil.org](mailto:bgrc@bulrefocouncil.org)

## Our consortium



**CRESCER**, Portugal (leading partner)

**Arci Catania**, Italy

**Bulgarian Council on Refugees and Migrants**, Bulgaria

**Östersunds Kommun**, Sweden

**Programma Integra**, Italy

## The project

